

Mobile Self-Checkout Feature

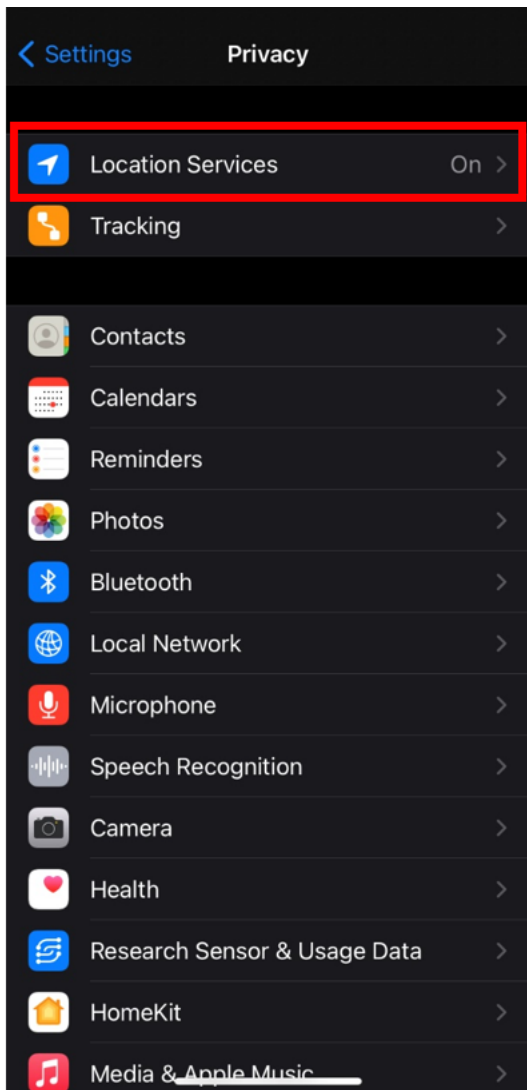
iOS: Must run iOS 13 on an iPhone 7 or above

Android: Must run Android 5 or above on mobile device with access to an NFC reader

Prerequisite: Ensure Location Services is enabled in iOS for Hume Libraries App

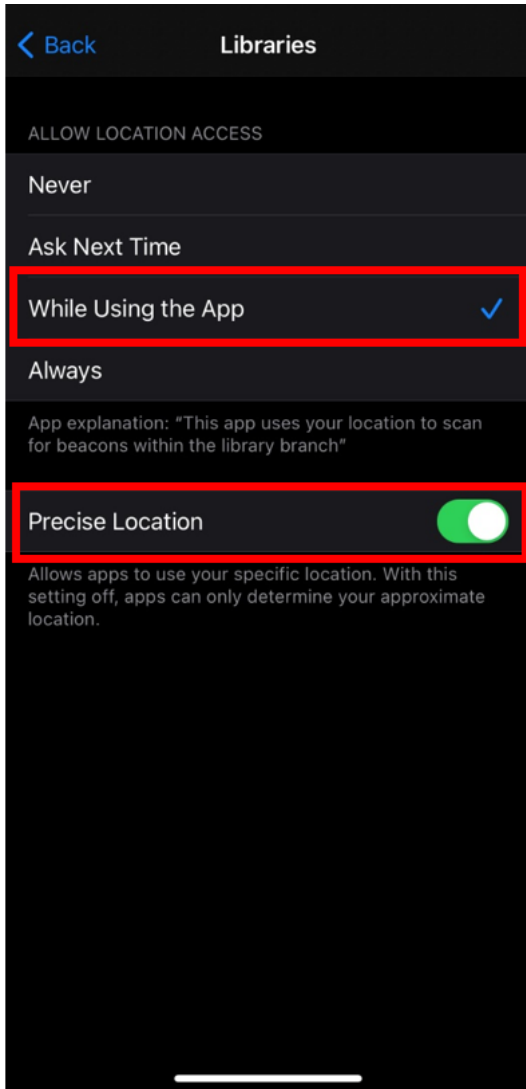
Go to Settings --> Privacy --> Location Services

Toggle 'Location Services' to On



Tap on 'Hume Libraries App' (on same screen)

Tap 'While Using the App' and Toggle 'Precise Location' to On



Prerequisite: Ensure Location Services is enabled in Android for Hume Libraries App

Swipe down from the top of the screen

Touch and hold Location

If you don't find Location: Tap Edit or Settings and then drag Location into Quick Settings

Tap App permission

Tap Hume Libraries App (then tap Permissions --> Location)

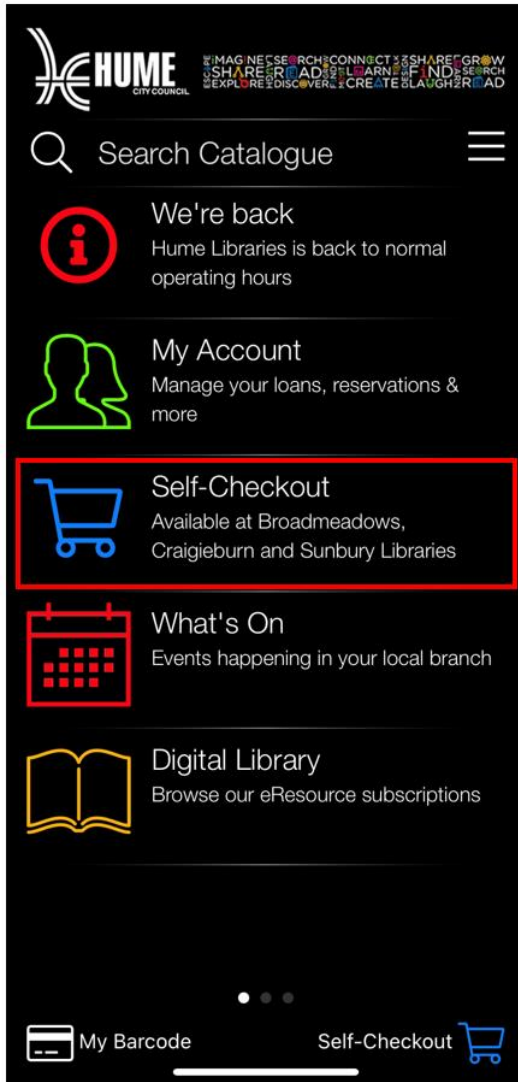
Choose 'Allowed only while in use'

Using Mobile Self-Checkout

Note this feature is only enabled at Broadmeadows, Craigieburn and Sunbury Libraries

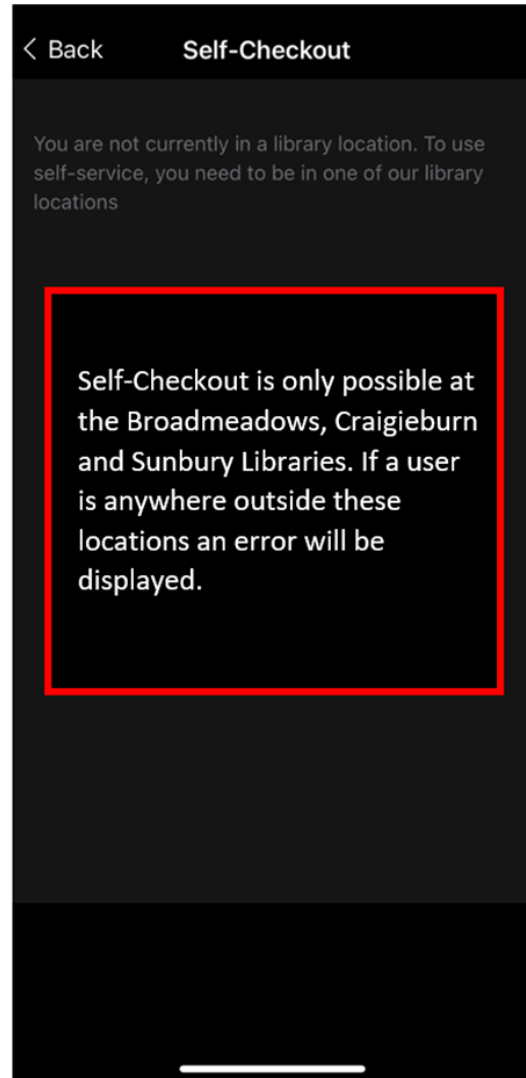
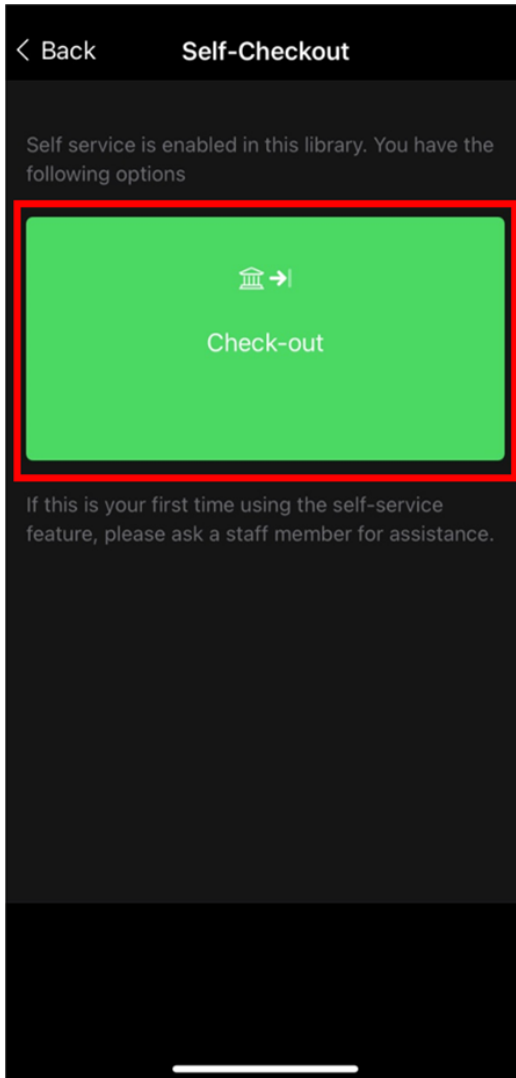
Open the Hume Libraries App

Tap 'Self-Checkout'

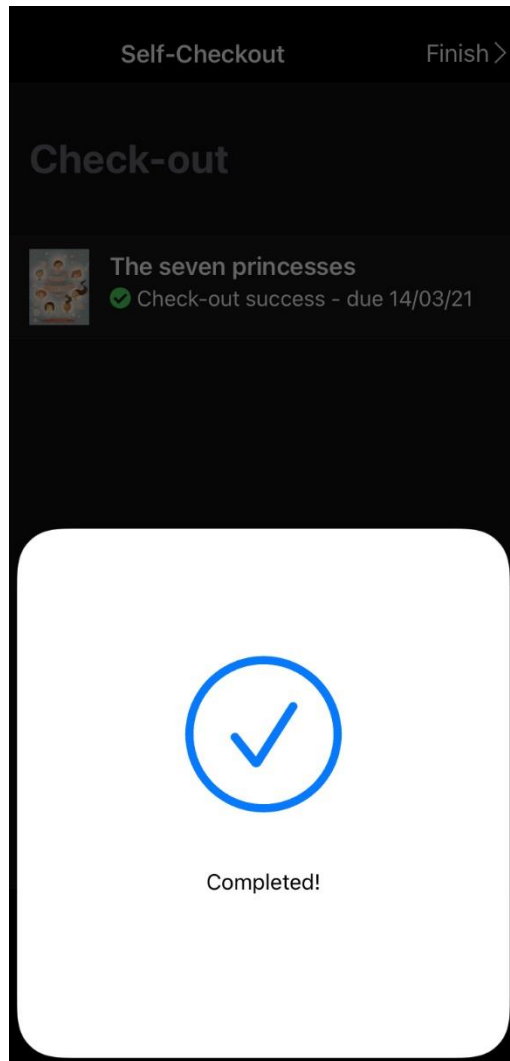
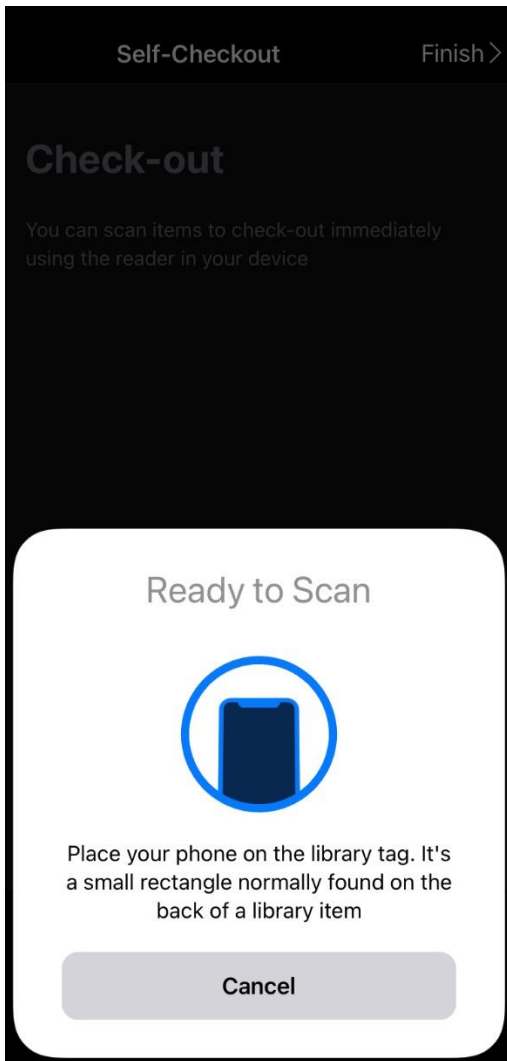


Tap 'Enable Location Services' (this step is required only the first time this feature is used)

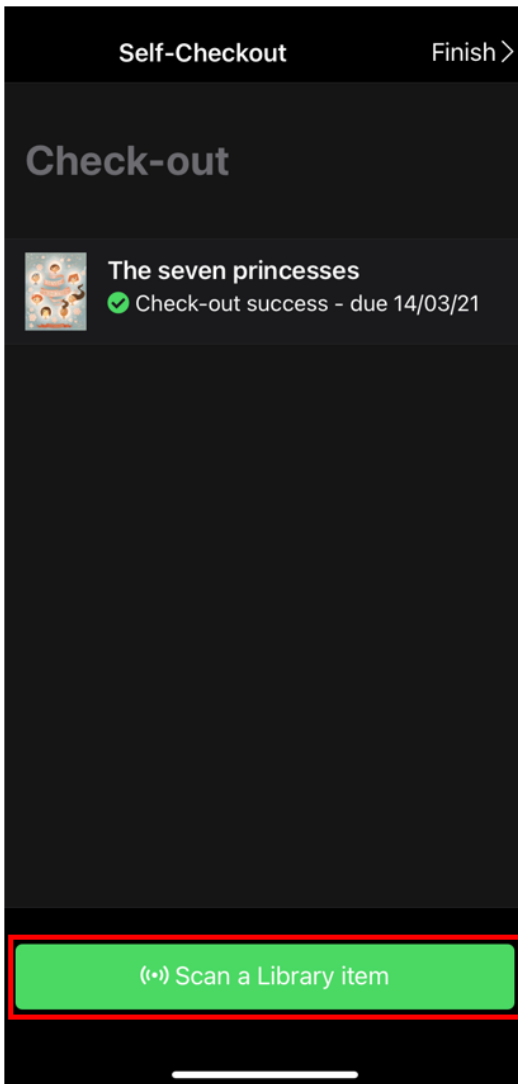
Tap 'Check-out'



Place the mobile device on the RFID of the item to be borrowed



Tap 'Scan a Library item' and repeat previous step for all items to be borrowed



Tap 'Finish' on the top right of the screen and then 'OK' on summary screen

